

PolySto OP20F Kerb - Sanicoat

- Hygienic and mechanical protection against light transport of wall panels in the food industry
- Protection against water infiltration to the wall panels
- Avoidance of hollow spaces that can contain bacteria
- Skirting of the wall/floor and wall/kerb junction

Application: protection of panel walls against trolleys in production area's, cold rooms,...

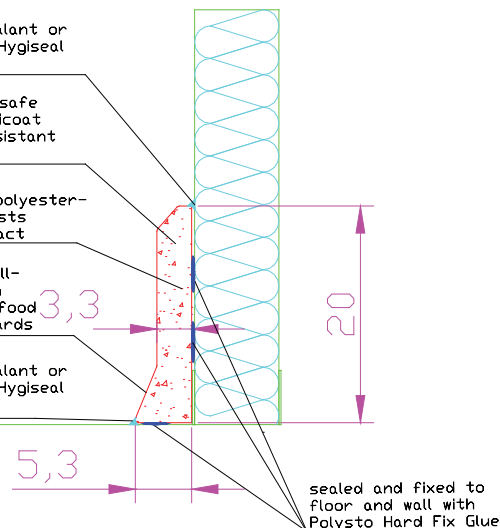
Food safe Sealant or bi-component Hygiseal RAL 9002

smooth, food safe polyester sanicoat - scratch resistant

homogeneous polyester-concrete resists mechanical impact

skirting to wall-floor function according to food safety standards

Food safe Sealant or bi-component Hygiseal RAL 9002



Specification

PolySto OP20F Sanicoat is a prefabricated kerb 1000x200x53mmH with sloping top and skirting to wall-floor according the EU-requirements. The OP20F Sanicoat kerb consists of a water repellent Polymer Composite mass (Polyester and quartz) and the surface is finished Food Safe with a smooth Sanicoat (Polyester gelcoat). Including matching accessories; prefabricated internal and external corners and endpieces.

Waterproof bonding using PolySto Hard Fix Glue (Hybrid Polymere). Finishing of the joints using PolySto Food Safe Sealant or PolySto HygiSeal, a 2-component polyurethane mass.

Technical information

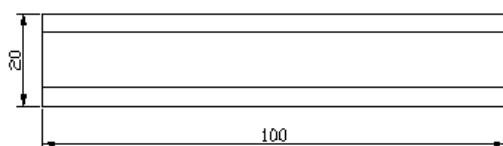
	<u>Plinth</u>	<u>Inner corner</u>	<u>External corner</u>	<u>End piece left / right</u>
Length	100 cm	2 x 50 cm	4 cm	50 cm
Height	20 cm	20 cm	20 cm	20 cm
Thickness middle	3,3 cm	3,3 cm	3,3 cm	3,3 cm
Thickness feet	5,3 cm	5,3 cm	5,3 cm	5,3 cm
Weight	14,9 kg	14 kg	14 kg	7 kg

Consumption

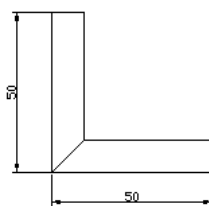
Option 1: Sealant white	150 cc / m
Sealant transparant	100 cc / m
Option 2: Hygiseal RAL 9002	130 cc / m
Polysto Hygiseal	300 cc / m
Hard Fix Glue	4 pc / m

Packing pallet

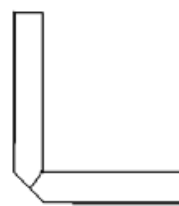
Dimensions	120x80x70cmH
Number of meters / pallet	50 m
Number of endpieces / pallet	50 L & 50 R
Weight	570 kg



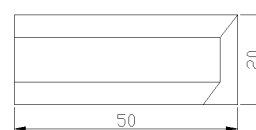
Kerb



Inner corner



External corner



End piece