



PolySto OP20RB Kerb - Sanicoat

- Hygienic and mechanical protection against light transport of wall panels in the food industry
- Protection against water infiltration to the wall panels
- Avoidance of hollow spaces that can contain bacteria
- Skirting of the wall/floor and wall/kerb junction

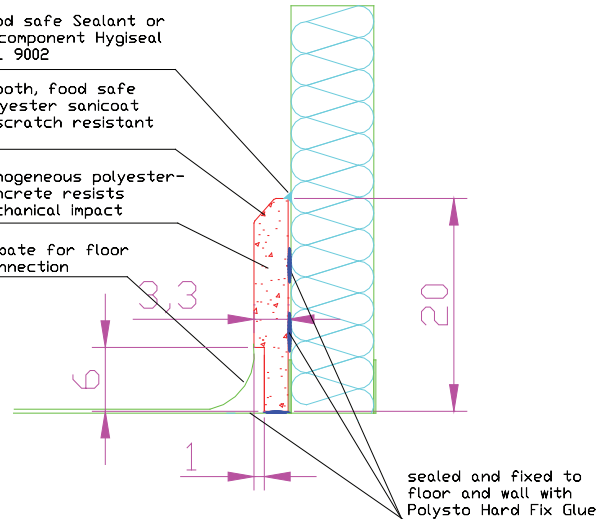
Application: protection of panel walls against trolleys in production area's, cold rooms,...

Food safe Sealant or bi-component Hygiseal RAL 9002

smooth, food safe polyester sanicoat - scratch resistant

homogeneous polyester-concrete resists mechanical impact

rebate for floor connection



Specification

PolySto OP20RB Sanicoat is a prefabricated kerb 1000x200x33mmH with sloping top and rebate where the floor can be mounted into the PolySto kerb (seamless connection). The OP20RB Sanicoat kerb consists of a water repellent Polymer Composite mass (Polyester and quartz) and the surface is finished Food Safe with a smooth Sanicoat (Polyester gelcoat). **Including matching accessories;** prefabricated internal and external corners and endpieces.

Waterproof bonding using PolySto Hard Fix Glue (Hybrid Polymere). Finishing of the joints using PolySto Food Safe Sealant or PolySto HygiSeal, a 2-component polyurethane mass.

Technical information

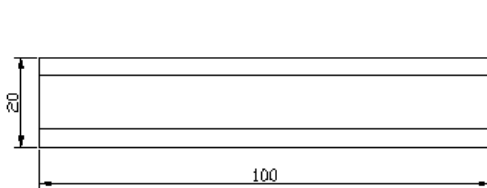
	<u>Plinth</u>	<u>Inner corner</u>	<u>External corner</u>	<u>End piece left / right</u>
Length	100 cm	2 x 50 cm	2 x 50 cm	50 cm
Height	20 cm	20 cm	20 cm	20 cm
Thickness middle	3,3 cm	3,3 cm	3,3 cm	3,3 cm
Weight	11 kg	11 kg	11 kg	5,5 kg
		2 x end piece	2 x end piece	

Consumption

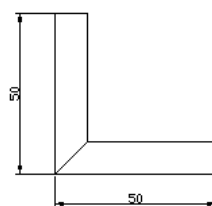
Option 1: Sealant white	150 cc / m
Option 2: Hygiseal RAL 9002	75 cc / m
Hard Fix Glue	300 cc / m
Installation pegs	4 pc / m

Packing pallet

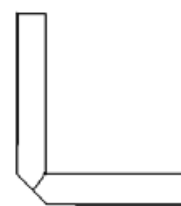
Dimensions	120x80x70cmH
Number of meters / pallet	50 m
Number of endpieces / pallet	50 L & 50 R
Weight	570 kg



Kerb



inner corner



External corner



End piece