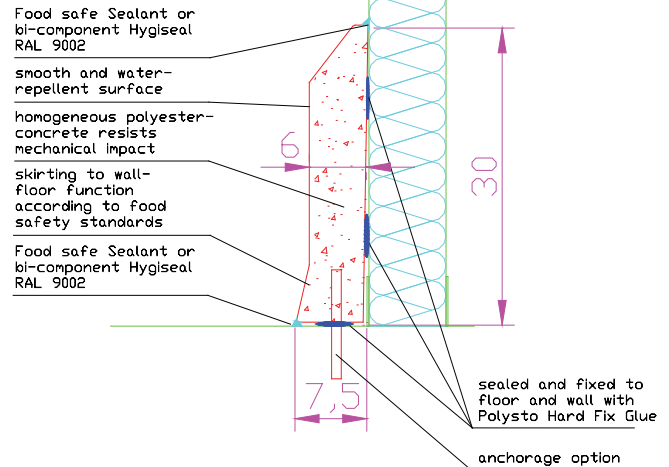




PolySto OP30F Kerb - Natural

- Hygienic and mechanical protection against medium transport of wall panels in the food industry
- Protection against water infiltration to the wall panels
- Avoidance of hollow spaces that can contain bacteria
- Skirting of the wall/floor and wall/kerb junction

Application: protection of panel walls against hand pallets in production areas, storage areas...



Specifications

PolySto OP30F Natural is a prefabricated kerb 1500x300x75mmH with sloping top and skirting to wall-floor according the EU-requirements. The OP30F Natural kerb consists of a water repellent Polymer Composite mass (Polyester and quartz). Including matching accessories; prefabricated internal and external corners and endpieces. Waterproof bonding using PolySto Hard Fix Glue (Hybrid Polymere). Finishing of the joints using PolySto Food Safe Sealant or PolySto HygiSeal, a 2-component polyurethane mass.

Technical information

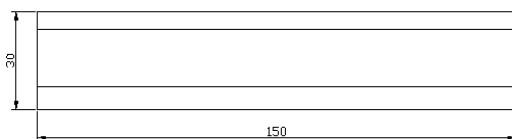
	<u>Plinth</u>	<u>Inner corner</u>	<u>External corner</u>	<u>End piece left / right</u>
Length	150 cm	2 x 50 cm	2 x 50 cm	50 cm
Height	30 cm	30 cm	30 cm	30 cm
Thickness middle	6 cm	6 cm	6 cm	6 cm
Thickness feet	7,5 cm	7,5 cm	7,5 cm	7,5 cm
Weight	45 kg	30 kg	30 kg	15 kg
Mechanical anchorage (option)	4 pc			

Consumption

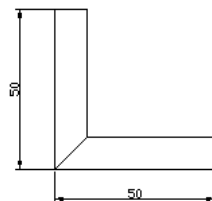
Option 1: Sealant RAL 9002	350 cc / m
Option 2: Hygiseal RAL 9002	150 cc / m
Hard Fix Glue	450 cc / m
Installation pegs	4 pc / m
Chemical anchorage	100 g / m

Packing pallet

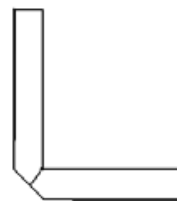
Dimensions	160x65x70cmH
Number of meters / pallet	30 m
Number of endpieces / pallet	20 L & 20 R
Weight	920 kg



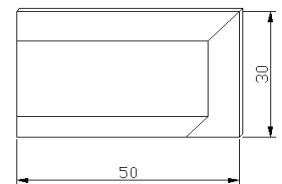
Kerb



Inner corner



External corner



End piece