



## PolySto OP30RB Kerb - Sanicoat

- Hygienic and mechanical protection against medium transport of wall panels in the food industry
- Protection against water infiltration to the wall panels
- Avoidance of hollow spaces that can contain bacteria
- With rebate for coving the floor finish to obtain the curving

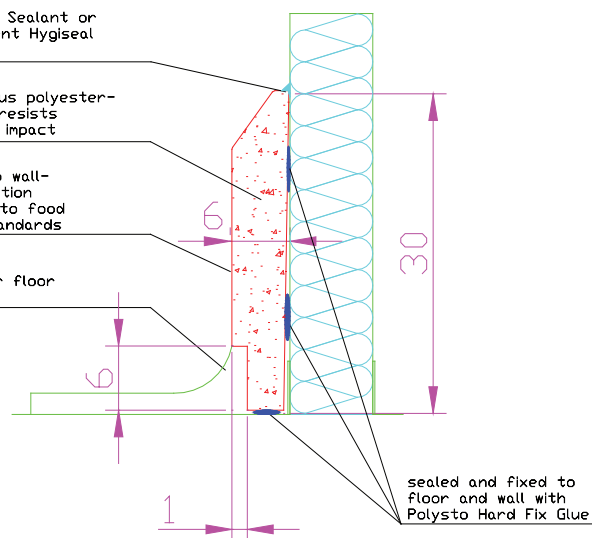
**Application:** protection of panel walls against hand pallets, in production areas, storage areas...

Food safe Sealant or bi-component Hygiseal RAL 9002

homogeneous polyester-concrete resists mechanical impact

skirting to wall-floor function according to food safety standards

rebate for floor connection



### Specification

PolySto OP30RB Sanicoat is a prefabricated kerb 1500x300x60mmH with sloping top and rebate where the floor can be mounted into the PolySto kerb (seamless connection). The OP30RB Sanicoat kerb consists of a water repellent Polymer Composite mass (Polyester and quartz) and the surface is finished Food Safe with a smooth Sanicoat (Polyester gelcoat). Including matching accessories; prefabricated internal and external corners and endpieces.

Waterproof bonding using PolySto Hard Fix Glue (Hybrid Polymere). Finishing of the joints using PolySto Food Safe Sealant or PolySto HygiSeal, a 2-component polyurethane mass.

### Technical information

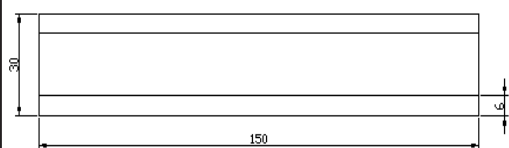
	Plinth	Inner corner	External corner	End piece left / right
Length	150 cm	11,5cm/11,5cm	5 cm	50 cm
Height	30 cm	30 cm	30 cm	30 cm
Thickness middle	6 cm	6 cm	6 cm	6 cm
Weight	51 kg	6 kg	1,5 kg	17 kg
Mechanical anchorage (option)	4 pc			2 pc

### Consumption

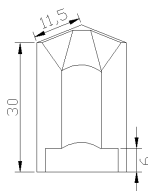
Option 1: Sealant white	200 cc / m
Option 2: Hygiseal RAL 9002	80 cc / m
Hard Fix Glue	450 cc / m
Installation pegs	4 pc / m

### Packing pallet

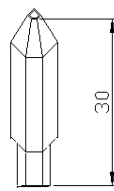
Dimensions	160x65x70cmH
Number of meters / pallet	30 m
Number of endpieces / pallet	20 L & 20 R
Weight	920 kg



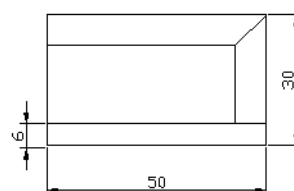
Kerb



Inner corner



External corner



End piece